

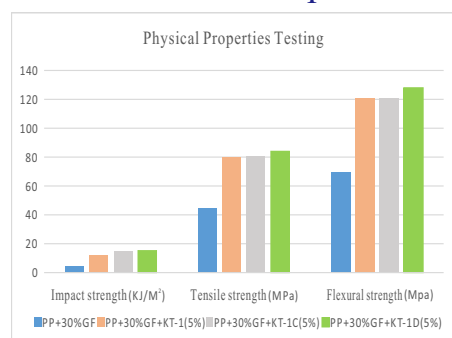
## Compatibilizer

Compatibilizer KT-1 series is the copolymer of maleic anhydride grafted polypropylene (abbreviated herein as MAH-g-PP), which serves as interfacial modifiers between polymers and fillers, such as glass fiber or mineral-filled and PP. Adding 3% to 5% of it can improve PP printability. It's mainly used for the preparation method of automotive parts, home appliances, and furniture, and for TPE encapsulated PA, etc.

### Product Specification

Product No.	Melt Flow Rate(MFR) (190°C, 2.16kg,g/10min)	Grafted Rate(%)	Density(g/m <sup>3</sup> )	Substrate	Color
KT-1	80-140	Medium	0. 91-0. 95	PP	White or Light Yellow
KT-1C	100-140	Medium	0. 90-0. 93	PP	White or Light Yellow
KT-1D	100-140	High	0. 91-0. 93	PP	White or Light Yellow

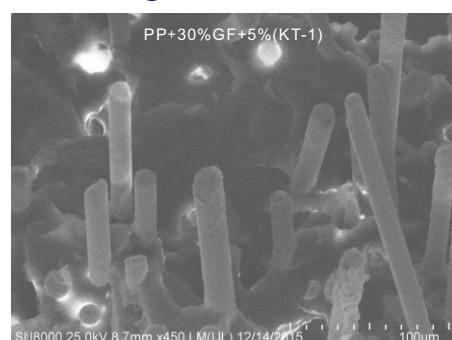
### Performance Comparison



### Product Photo (MAH-g-PP Pellets)



### Scanning Electron Microscopy(SEM)



### Dosage

3%~5%, glass fiber reinforced PP.

### Packing, Storage And Transportation

The product is packed in 25Kg kraft paper bag lined with a plastic bag.

According to the requirement of non-dangerous goods, it is stored and transported under dry conditions to avoid sunlight and rain.